




**HARVEST VILLE**

*The Living Park*

The background features a dark green, textured surface. Overlaid on this are two stylized, light green trees. The tree on the left has long, narrow leaves and a round fruit hanging from a branch. The tree on the right has broader leaves and a flower. The text is centered between the two trees.

*Sustainable living comes to life at Sequoia Hills, where every corner is designed with the planet in mind. This means a healthier and more efficient way of living that contributes to the future while providing a high quality of life today. At Sequoia Hills, you'll experience a lifestyle that allows you to enjoy nature, comfort, and responsibility all in one place.*





WELCOME TO  
**HARVEST VILLE**  
*The Living Park*





HARVEST VILLE

# *HOMEGROWN HAPPINESS AWAITS*



Inspired by the beauty and simplicity of rural living, Harvest Ville brings the essence of a self-sustaining lifestyle into a modern urban setting.

Imagine waking up to the gentle sounds of nature and stepping outside to find fresh vegetables and herbs thriving right before your eyes. Harvest Ville invites you to immerse yourself in the calming pulse of nature, where families, friends, and neighbors come together—growing happiness at your harvest-full home.





*We bring the essence of  
self-sustaining lifestyle in  
urban setting*

*A GLIMPSE INTO A HARVEST-FULL LIVING*





FACILITIES

# HOW HARVEST VILLE GROWS IN YOU.



## Urban Farm

Offering a farm-to-table lifestyle where organic ingredients grown just steps from your door.



## Organic Market & Cafe

You can savor the harvested goods, from freshly made juices to flavourful salads, at the organic market.



## Lakeside Park

The serene riverside park will spoil you with its calming atmosphere, a perfect spot to bathe in nature's goodness.





*Harvest the goodness  
right at home.*

FACILITIES

# URBAN FARM

*The First Residential Cluster to Feature an Urban Farm*

Harvest Ville embodies a unique community-driven initiative with three dedicated Urban Farms that cultivate fresh vegetables and herbs. Managed in partnership with a third-party expert and actively involving residents, these farms provide a sustainable food source while fostering a deep sense of community. Homeowners can enjoy a rare glimpse into the journey of their food, directly savoring the freshest produce grown just steps from their door, delighting in the most organic ingredients available.







*Witness the herbs and vegetables  
sprout from the earth.*

*FRESH VEGETABLES & HERBS AT YOUR TERRACE.*





*Taste the fresh,  
savor the wellness.*

FACILITIES

# ORGANIC MARKET & CAFÉ

The Organic Market, located at the entrance of the cluster, serves as a vibrant hub for healthy living. It offers residents and visitors fresh produce directly from the Urban Farms, providing a true farm-to-table experience. More than just a market, it features a cozy café where you can enjoy freshly made juices, salads, and aromatic coffees, all sourced from the community's own harvest.





*Immerse in a vibrant  
community driven market  
and artisan coffee!*



*VIBRANT HUB FOR HEALTHY LIVING*





*Curated with care, the organic market  
and café invite residents to savor sustainable,  
farm-fresh flavors in every bite and sip.*

HARVEST VILLE

# ORGANIC MARKET & CAFÉ





*Sunday morning at the  
organic market and cafe feels  
like a breath of fresh air*







FACILITIES

# *LAKE**SIDE* *PARK*

Harvest Ville's natural beauty is elevated by its serene Lakeside Park, which runs alongside the tranquil river winding through the cluster. Whether jogging by the water, enjoying a family picnic, or simply taking in the surroundings, Lakeside Park provides a perfect blend of nature and leisure at the community's heart.





# GROW ALONGSIDE NATURE.

The preservation of 20-year-old Trembesi trees offers not only shade but a profound sense of tranquility. Rather than reshaping the land to accommodate the buildings, Harvest Ville chooses to harmonize with the existing landscape.



*Preserving the  
trembesi trees*







HARVEST VILLE  
*The Living Park*

LEGENDS

- 1 ENTRANCE GATE
- 2 ORGANIC MARKET
- 3 LAKESIDE PARK
- 4 URBAN FARM
- 5 RIVER PARK
- 6 JOGGING TRACK
- 7 CHILDREN PLAYGROUND
- 8 SPORTS PARK

UNIT TYPES

- TYPE 12
- TYPE 9
- TYPE 8





PLANS

TYPE *12*



12 X 21





TYPE 12

12 X 21



GROUND FLOOR



1<sup>ST</sup> FLOOR



2<sup>ND</sup> FLOOR



TYPE **12**

Forming a graceful sequence along the serene lake, these homes offer an unparalleled living experience, with calm waters reflecting the surrounding beauty. Expansive windows invite breathtaking lake views, creating a sense of peace and openness. This lakeside location provides a daily escape, where the gentle ripples of water welcome you into refined tranquillity.



SPECIAL FEATURE

# *LAKESIDE HAVEN*







LIVING ROOM

TYPE 12





DINING ROOM & KITCHEN





BEDROOM

TYPE 12





CORNER

TYPE 12





PLANS

TYPE 9



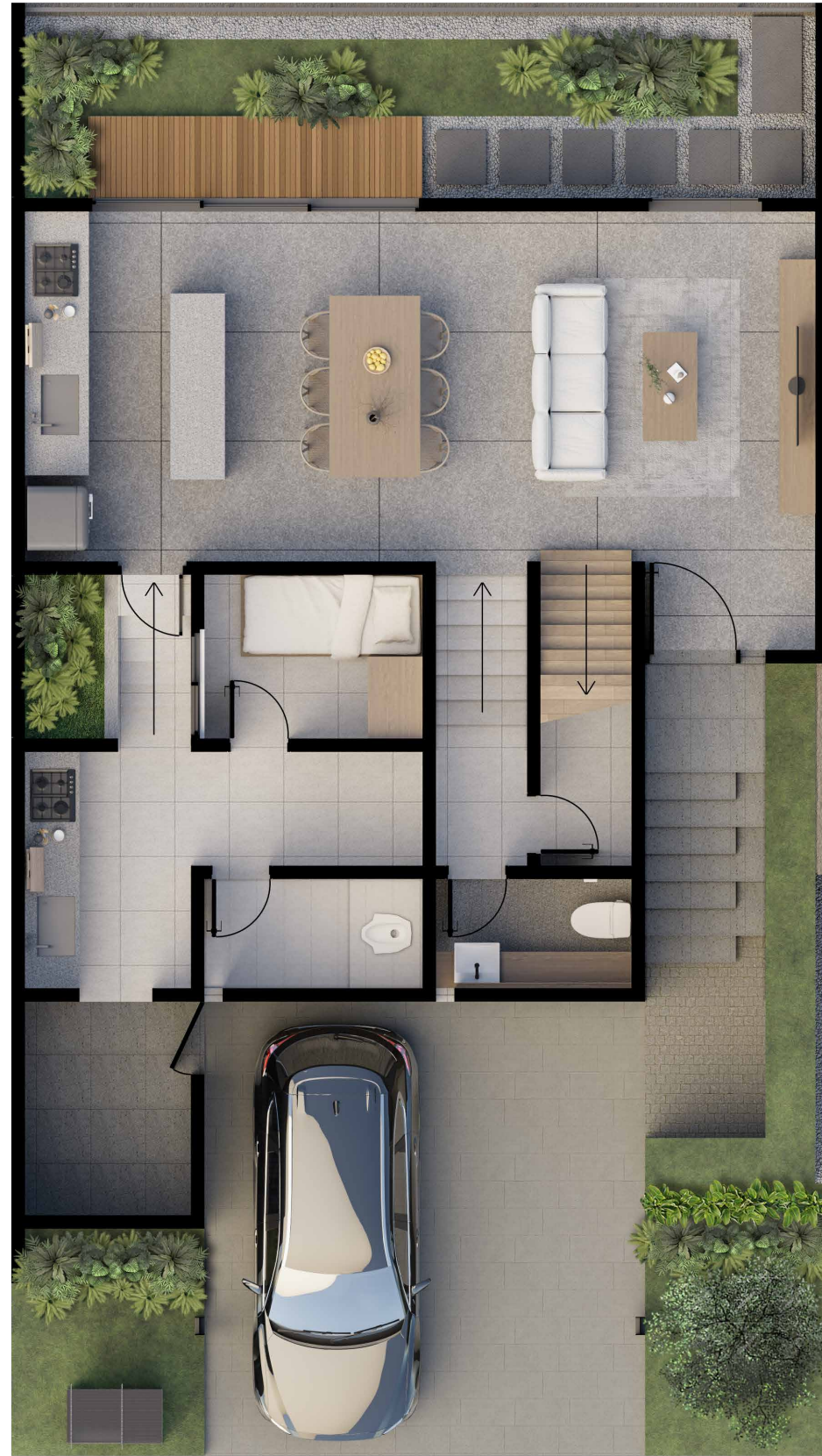
9 X 16





TYPE 9

9 X 16



GROUND FLOOR



1<sup>ST</sup> FLOOR



*Enjoy your morning coffee  
as you soak in the fragrant aroma  
of freshly harvested herbs  
drifting through the air.*

HARVEST VILLE

*URBAN FARM*

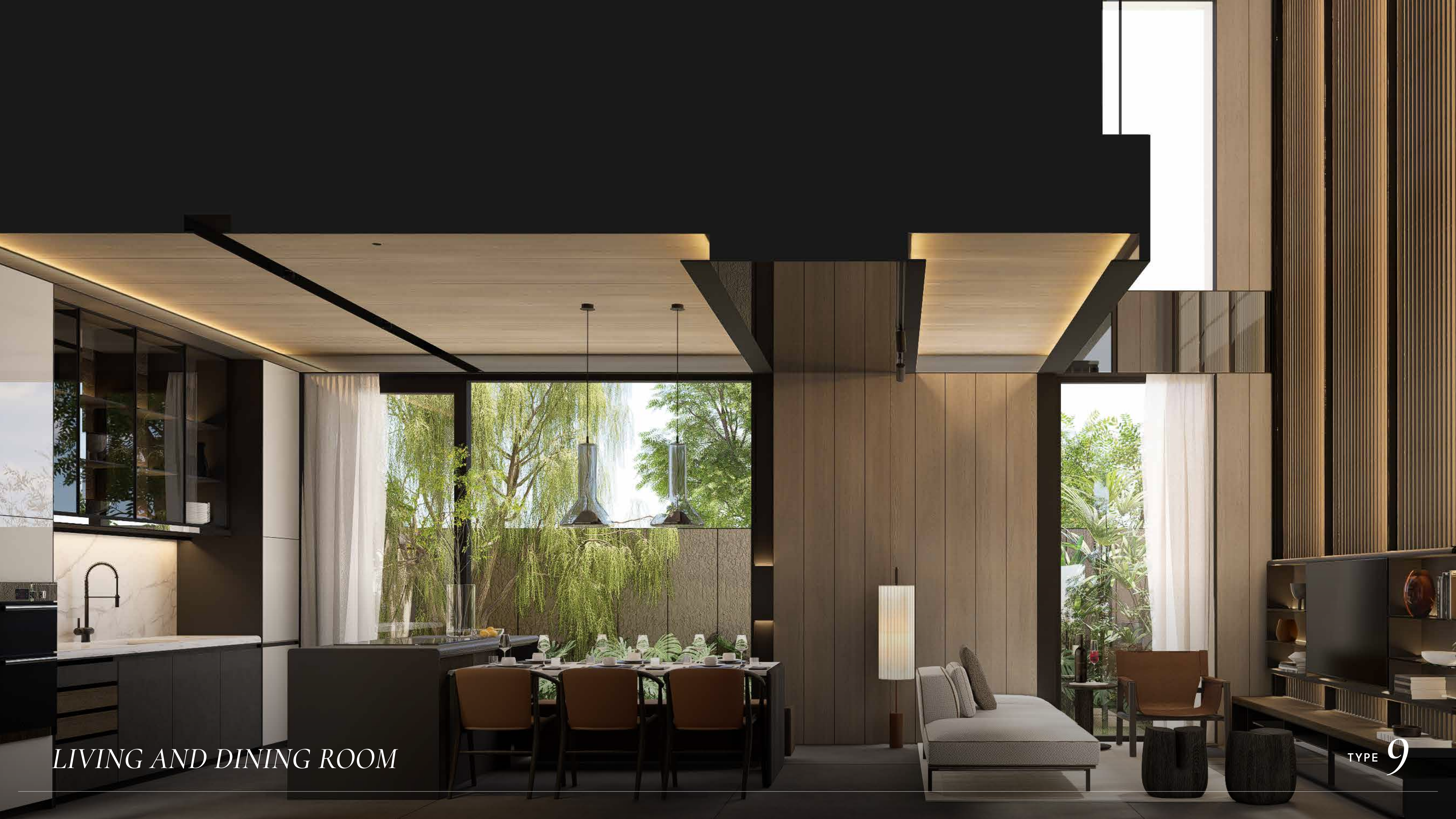




CORNER

TYPE 9



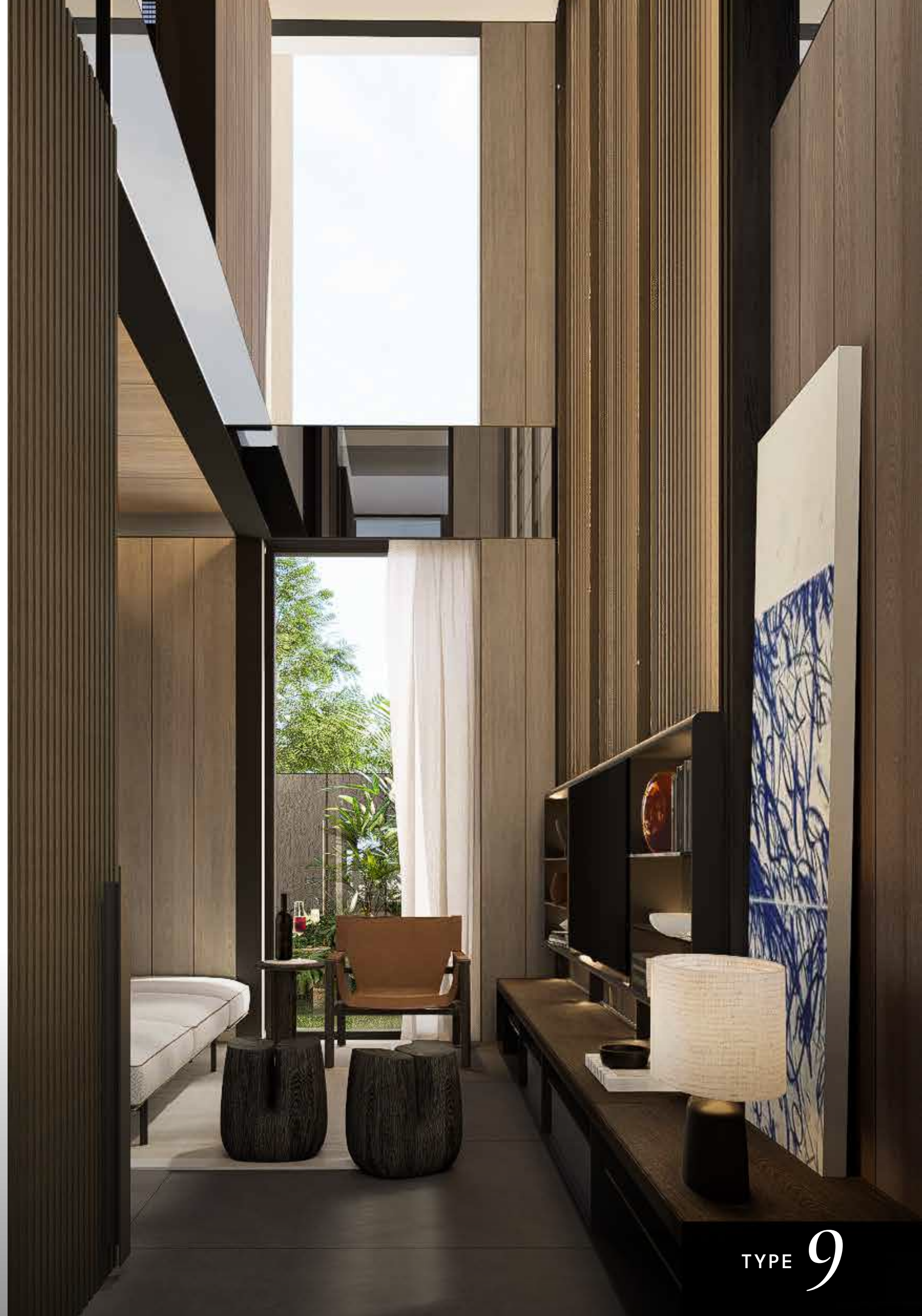


*LIVING AND DINING ROOM*





LIVING ROOM



TYPE 9









*MASTER BEDROOM*









PLANS

TYPE 8



8 X 15





TYPE 8

8 X 15



GROUND FLOOR



1<sup>ST</sup> FLOOR





FAÇADE & CARPORT





CORNER

TYPE 8





LIVING ROOM

TYPE 8





DINING KITCHEN



HOME THEATER

TYPE 8





MASTER BEDROOM

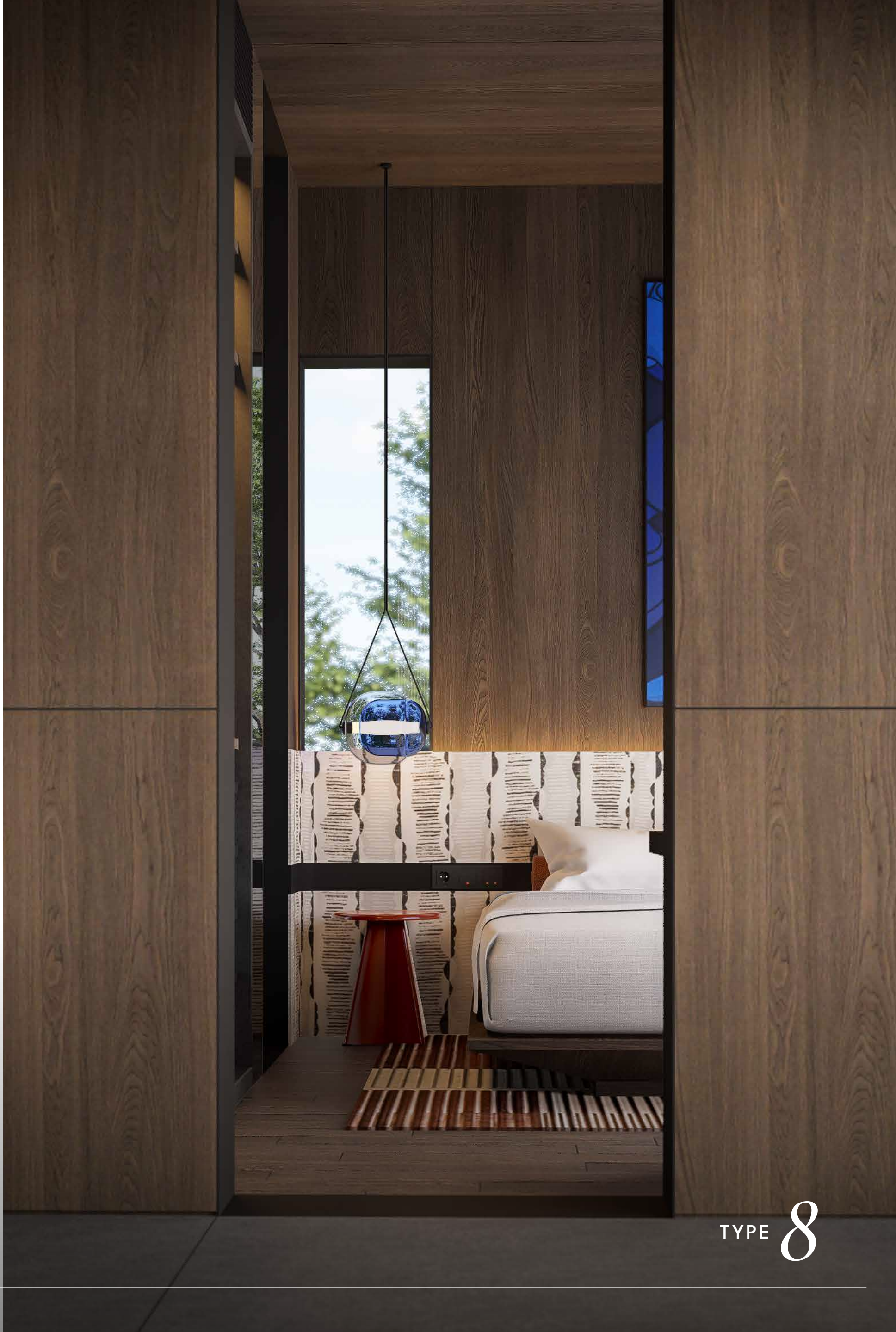


TYPE 8





*KIDS BEDROOM*



TYPE 8





*RIVER PARK*





*JOGGING TRACK*





PLAYGROUND





SPORTS PARK



# UNIT SPECIFICATIONS



FOUNDATION	Mini Piles (Based on Site Condition)
MAIN STRUCTURE	Reinforced Concrete
WALL	
Exterior	Brick Wall in Weathershield Protection
Finishes (Combination)	Texture Paint Finishes Breeze Block Brick in Painted Finishes Stick on Wall Stone Brick
Interior	Light Brick Wall in Plastered Finishes
General Finishes	Light Colour Paint Finishes
Bathroom Finishes	Homogenous Tiles
CEILING	
Exterior	GRC Board in Light Colour Finishes
Interior	Gypsum Board in Light Colour Finishes
ROOF	Bitumen Roof on Lightweight Steel Roof Scructure

DOOR	
Main Entrance Door	Solid Enginereed Wood in Veneer or Laminate Finish
Garage Door	Painted Metal Folding Door
Interior Door	Enginereed Wood in Laminate Finish
WINDOW	Glass with Aluminium Frame in Powder Coated
FLOOR FINISHES	
Carport & Garage	Homogenous Tiles
Stairs	Homogenous Tiles
Terrace & Balcony	Homogenous Tiles with Wood Pattern
General Room	Homogenous Tiles
Living Room	Homogenous Tiles
Bedroom	Enginereed Wood in Laminate Finish
Bathroom	Homogenous Tiles
KITCHEN	Top Table in Sintered Stone

SANITARY WARES	
Sanitary	GROHE / Equivalent
Fitting	GROHE / Equivalent
ELECTRICITY (PLN)	
Type 8	4.400 VA
Type 9	5.500 VA
Type 12	6.600 VA
SMART LIVING	Home Gate Communication CCTV Smart Door Key System Solar Panel





**HARVEST VILLE**

*The Living Park*

CONTACT US

**0812 626 626 20**

[WWW.SEQUOIAHILLS.CO.ID](http://WWW.SEQUOIAHILLS.CO.ID)



**Sequoia Hills**

A BREATHING CITY

Jl. Sentul Raya, Kadumangu, Bogor, Jawa Barat 16810

📷 sequoiahills